

# SONOMA DEVELOPMENTAL CENTER PROPOSED TO BE CLOSED

**Facts:**



**The Department of Developmental Services (DDS) is writing a plan to close Sonoma Developmental Center. This plan must be given to the Legislature by October 1, 2015.**

# THE PLAN

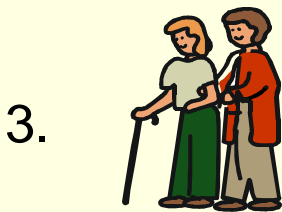
## The **plan** must talk about:



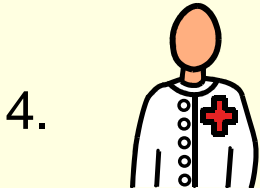
How closing will affect residents and families.



Places for people to move to.



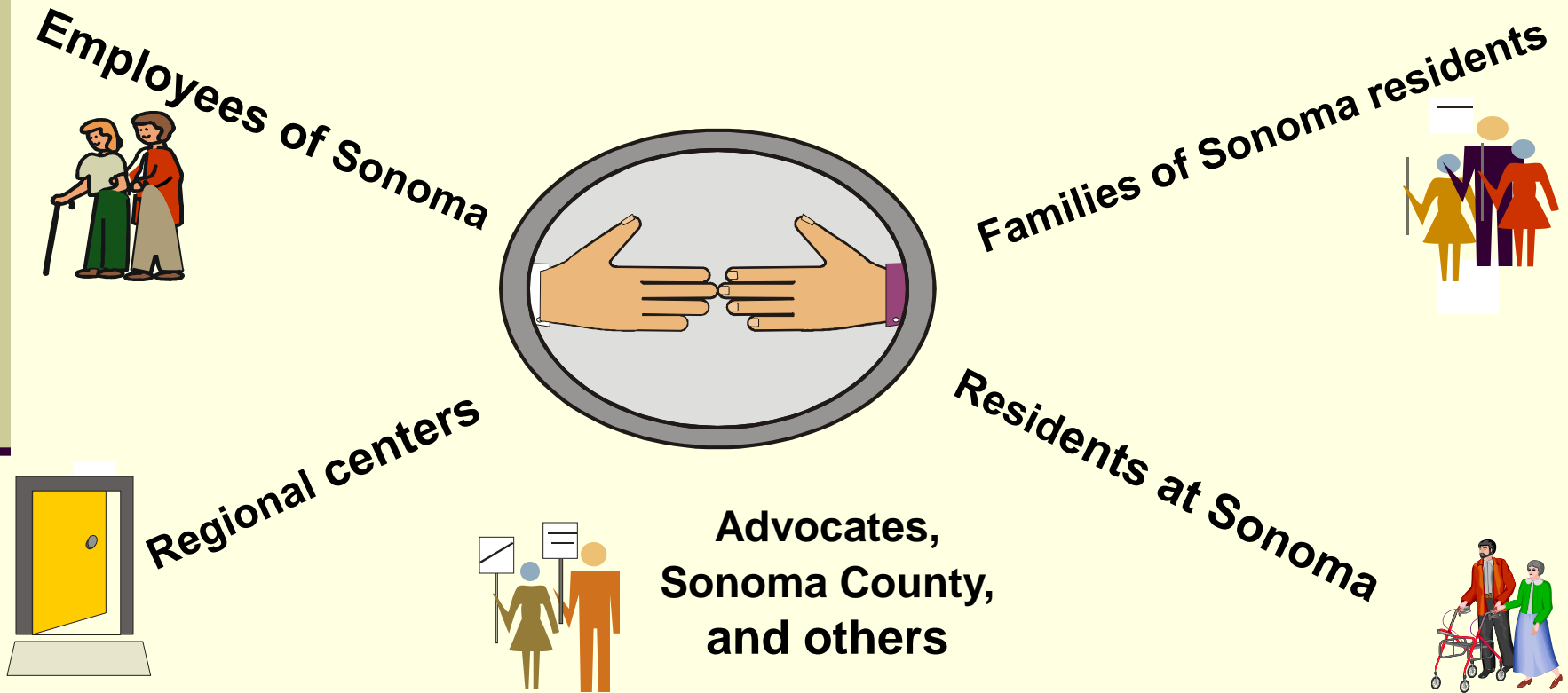
Where people will get services.



Possible jobs for Sonoma employees.

# HOW THE PLAN IS MADE

The plan includes getting comments from:



# Consumer Input

---

- If you were moving out of Sonoma Developmental Center, what is important to you about:
  - A place to live?
  - What to do during the day (job, fun)?
  - Staying well?
  - Seeing family and friends?

# Consumer Input

---

- What should the people living at Sonoma do to get ready to move?
  
  
  
  
  
  
  
  
  
  
- What can self-advocates do to help people living at Sonoma to move?

# THANK YOU

If you have any more comments, or questions, contact DDS:



**By Email:** [Sonoma.closure@dds.ca.gov](mailto:Sonoma.closure@dds.ca.gov)



**By Phone:** (916) 654-1706



**By Mail:** Department of Developmental Services  
Attn: Cindy Coppage  
1600 9th Street, Room 340, M.S. 3-17  
Sacramento, CA 95814

**ALL COMMENTS FOR THE CLOSURE PLAN ARE  
DUE BY SEPTEMBER 1, 2015**