



San Andreas Regional Center

Serving the heart of silicon valley and beyond!

Lanterman Act

Section 4501: "The State of California accepts a responsibility for persons with developmental disabilities and an obligation to them which it must discharge. Affecting hundreds of thousands of children and adults directly, and having an important impact on the lives of their families, neighbors and whole communities, developmental disabilities present social, medical, economic and legal problems of extreme importance."



- SARC serves the heart of Silicon Valley
- Counties served include Santa Clara, Monterey, San Benito, and Santa Cruz
- Major cities include San Jose, Monterey, Santa Cruz, Hollister, and all of the cities that define the Silicon Valley (Mountain View, Sunnyvale, Cupertino, and beyond)
- SARC serves over 16,500 individuals WU2
- SARC, along with Regional Center of the East Bay and Golden Gate Regional Center closed the Agnews Developmental Center in 2009. Over 300 individuals transitioned into community settings. Some transferred to other RC's



Agnews Developmental Center

Santa Clara, CA

- * Served individuals with mental illness from 1888-1972
- * Served individuals with developmental disabilities from 1965 until 2009, when the last individual moved
- * AB 2100 (WI Code 4688.5) was passed to initiate the closure

The Bay Area Housing Plan was started in 2005. It allowed regional centers through their partners to acquire and control an inventory of homes for the sole use of people with developmental disabilities

Before placing, things considered included:



Placement options

Supported
Living

Specialized
Residential
Facilities

Family Home
Agency (FHA)

Adult
Residential
Homes

SB 962
(ARFPSHN)

Family
Teaching
Model

Intermediate
Care
Facilities
ICF-DDH/ICF-
DDN

Sonoma Developmental Center (SDC) Client Population

- SARC currently has 3 individuals at Sonoma. One will transition into the community early next month.
- Since May 2015, 4 have transitioned into the community.
- One individual is currently being transferred to the east bay per family request.
- At this time, no transfers into the SARC area have been made. SARC did take a transfer in from Fairview DC in November 2016

Community Resources

- Dental Clinics (MOU's with several clinics)
- Sedation Dentistry
- Medical Clinic MOU's (include FQHC) - Work closely with Stanford and Santa Clara County Valley Medical Center
- Have two mobile crisis teams that can help address situations.
- Have vendor agreements for Adaptive Equipment/other medical needs
- Day programs with emphasis on community integration and employment

In Development:

- a) 2 Enhanced Behavioral Homes- with nursing component**
- b) Community Crisis Home for Children**
- c) Specialized Residential Facility working with challenging behaviors (step down from Crisis Home)**

Crisis Services

- SARC has two crisis teams that can respond to a situation
- SARC has an MOU with Mental Health that spells out how and when they will work with our individuals
- SARC works with local law enforcement to help them understand who we serve and how communication may differ
- SARC is developing both a specialized residential facility that will deal with intense behaviors and two enhanced behavioral homes



Sonoma Closure:

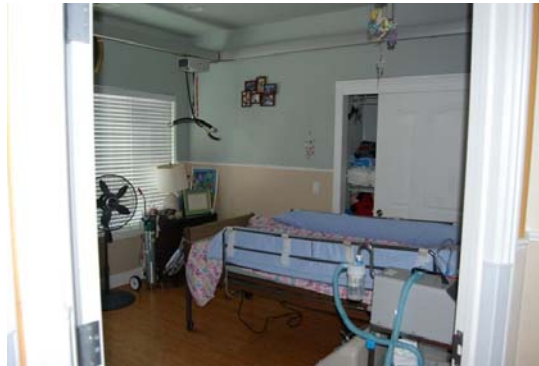
- * 11385 Rothe Ave., Gilroy
- * SARC has approved acquisition as of 1/26/17
- * Will Work with DDS for final approval
- * Sits on 2.1 acres
- * Home is over 3000 sq/ft
- * Each individual will have own room
- * Hospital is 1 mile away
- * Dental Clinic is 2.5 miles away
- * Neighbors are spread out
 - Home is right off of 101
 - This Home will be a EBSH-N

San Andreas and Bay Area Housing have one more Sonoma specific home to acquire.

Existing Homes



ARFPSHN



*Contact Us

To arrange any tours or to get more information, please send an email info@sarc.org

or call Jim Elliot, District Manager at 408-374-9960

Javier Zaldivar, 408-341-3476 or jzaldivar@sarc.org