

Regional Center of the East Bay

James M. Burton, Director
500 Davis Street, Suite 100, San Leandro, CA
94577
Phone: (510) 383-1200 • Fax: (510) 633-5022
E-mail: writetous@rceb.org
www.rceb.org



Spring 2011

Performance Report for Regional Center of the East Bay

Every year, the Department of Developmental Services (DDS) contracts with regional centers in California to serve consumers and families. And, every year DDS looks at how well the regional centers are doing. This report will give you information about your regional center.

Last year, at Regional Center of the East Bay (RCEB) we served about 15,200 consumers. The charts on page 2 tell you about the consumers we serve. You'll also see how well we are doing in meeting our goals and in fulfilling our contract with DDS.

At RCEB, we want to improve every year, do better than the state average, and meet or exceed the DDS standard. As you can see in this report, we improved over last year's performance in all areas.

The San Francisco Bay Area is a high cost of living, urban area. The majority of residential homes serving both children and adult regional center consumers are located in the two bay area counties served by RCEB (Alameda and Contra Costa). Although the percentage of RCEB children and adult consumers residing in out of home placement is slightly higher than the state average, supporting consumers in their own homes remains our priority as reflected by our improved performance in this area.

Although the number of RCEB consumers residing in developmental centers is higher than the state average, our total number has decreased. Historically our State Developmental Center population has always exceeded the state average due to the high number of RCEB consumers residing at Sonoma Developmental Center.

We hope this report helps you learn more about RCEB. If you have any questions or comments, please contact us!

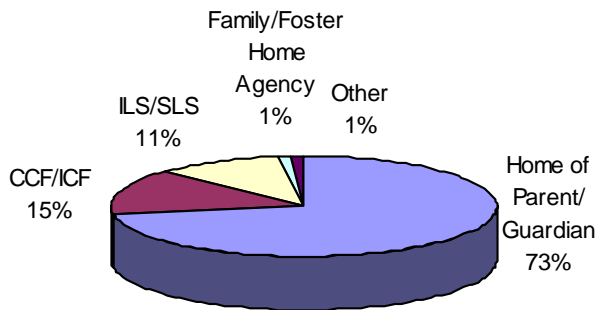
This report is a summary. To see the complete report, go to: www.rceb.org

Or contact Pam Thomas at **(510) 618-7708**

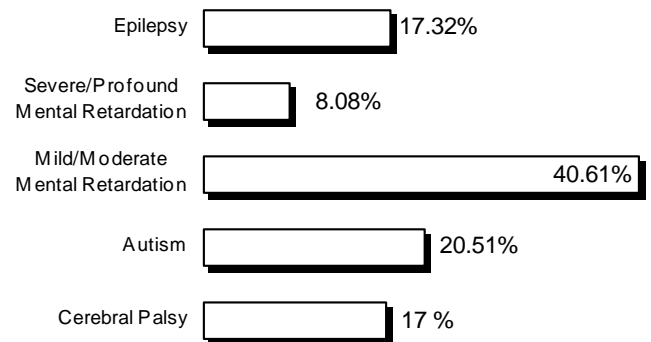
Who uses RCEB?

These charts tell you about who RCEB consumers are and where they live.

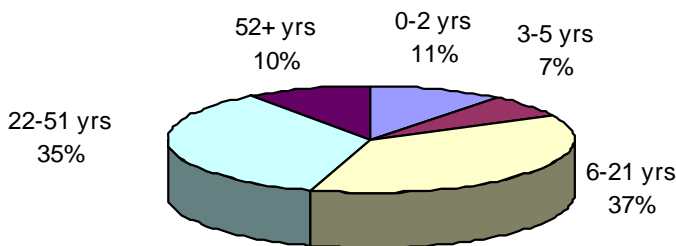
WHERE RCEB CONSUMERS LIVE



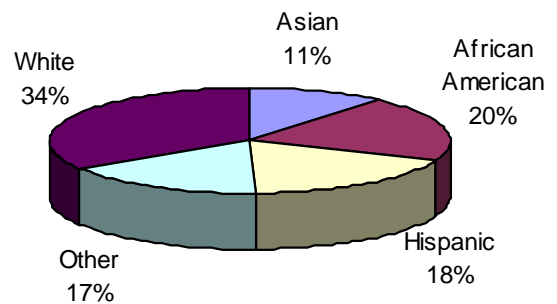
PRIMARY DIAGNOSIS OF RCEB CONSUMERS



AGE OF RCEB CONSUMERS



ETHNICITY OF RCEB CONSUMERS



How well is RCEB performing?

This chart tells you about 5 areas where DDS wants each regional center to keep improving.

The first column tells you how RCEB was doing at the beginning of 2010. And, the second column shows how RCEB was doing at the end of 2010.

To see how RCEB compares to the other regional centers in the state, compare the numbers to the state averages (in the shaded columns).

Regional Center Goals (based on Lanterman Act)	December 2009		December 2010	
	State Average	RCEB	State Average	RCEB
Less consumers live in developmental centers	0.91%	1.47%	0.83%	1.38%
More children live with families	98.48%	97.95%	98.60%	98.10%
More adults live in home settings*	73.20%	71.89%	73.99%	72.37%
Less children live in large facilities (more than 6 people)	0.13%	0.03%	0.13%	0.00%
Less adults live in large facilities (more than 6 people)	4.10%	4.02%	3.80%	3.92%

* Home settings include: independent living, supported living, Adult Family Home Agency homes, and consumers' family homes.

Did RCEB meet DDS standards?

Read below to see how well RCEB did in meeting DDS compliance standards:

Areas Measured	Last Period	Current Period
Passes independent audit	Yes	Yes
Passes DDS audit	Yes	Yes
Audits vendors as required	Met	Met
Didn't overspend operations budget	Yes	Yes
Participates in the federal waiver	Yes	Yes
CDERs are updated as required (<i>CDER is the Client Development Evaluation Report with information about the consumer's diagnosis</i>)	NA*	96.08%
Intake/Assessment timelines for consumers age 3 or older met	100%	100%
IPP (<i>Individual Program Plan</i>) requirements met	99.86%	99.92%
IFSP (<i>Individualized Family Service Plan</i>) requirements met	88.57%	89.29%

*Measure was temporarily suspended during implementation of the Revised CDER.

What about other performance areas?

In the future, we will measure how well we are doing in other areas, including:

- Increasing the number of consumers who work,
- Getting better pay for consumers who work,
- Making sure consumers get medical and dental services, and
- Meeting Intake/Assessment and IFSP timelines for children 0–3.

Want more information?

To see the complete report, go to www.rceb.org

Or contact Pam Thomas at **(510) 618-7708**