

Community Models and Supports

- **Parent/Family Member's Home:** Some consumers may live with parents or relatives. Regional centers generally provide additional supports for the family which include, but are not limited to: Day Services; In-Home or Out-of-Home Respite Services; Consultant Services; Behavior Intervention; Transportation; and/or, Independent Living Training.
- **Independent Living Skills (ILS):** Regional centers provide ILS services to an adult consumer consistent with his or her IPP, that provide the consumer with functional skills training that enables him or her to acquire or maintain skills to live independently in his or her own home, or to achieve greater independence while living in the home of a parent, family member, or other person
- **Supported Living Services (SLS):** SLS consist of a range of services to adults with developmental disabilities who, through the IPP process, choose to live in homes they themselves own, rent or lease in the community.

3

Community Models and Supports

- **Family Home Agency (FHA):** An agency that approves Adult Family Homes and Family Teaching Homes for individuals with developmental disabilities. An Adult Family Home may serve two individuals in the same home; a Family Teaching Home may serve up to three individuals. These individuals reside with a family and share in the interaction and responsibilities of being part of a family.
- **Self-Determination Program:** The Department of Developmental Services is developing a new program that will let participants have more control over selecting their services and supports.

4

Community Care Facilities

- CCFs are licensed by the State Department of Social Services to provide 24-hour non-medical residential care.



5

Alternative Residential Model (ARM)

- **Level 1:** Care and supervision for persons with self-care skills.
- **Level 2:** Care, supervision and incidental training for persons with some self-care skills and no major behavior challenges.
- **Level 3:** Care, supervision and ongoing training for persons with significant deficits in self-help skills, and/or some limitations in physical coordination and mobility, and/or disruptive or self-injurious behavior.
- **Level 4 A-I:** Care, supervision and training for persons with deficits in self-help skills, and/or severe impairments in physical coordination and mobility, and/or severely disruptive or self-injurious behavior. Service Level 4 is subdivided into Levels 4A through 4I in which staffing levels are increased to correspond to the individual needs.

6

Specialized Residential Facilities

Specialized Residential Facilities: Provide care, supervision and training for persons whose needs cannot be appropriately met within the array of other community living options available as determined by the planning team.



7

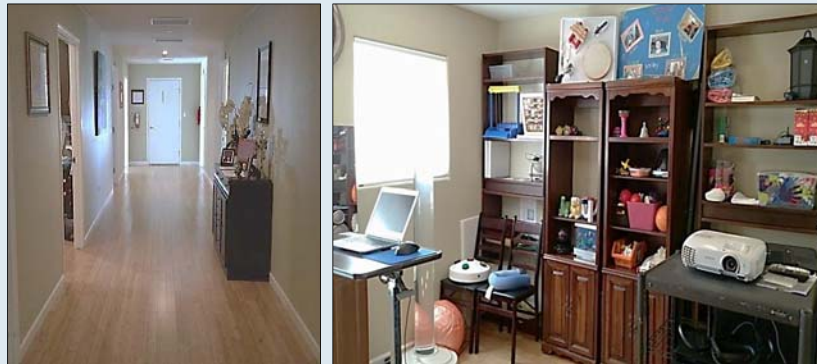
ARFPSHN Homes

Adult Residential Facility for Persons with Special Health Care Needs provide 24-hour health care and intensive support services in a homelike setting, licensed by Community Care Licensing, certified by DDS, and vendored by Regional Centers (also known as 962/853 homes).



8

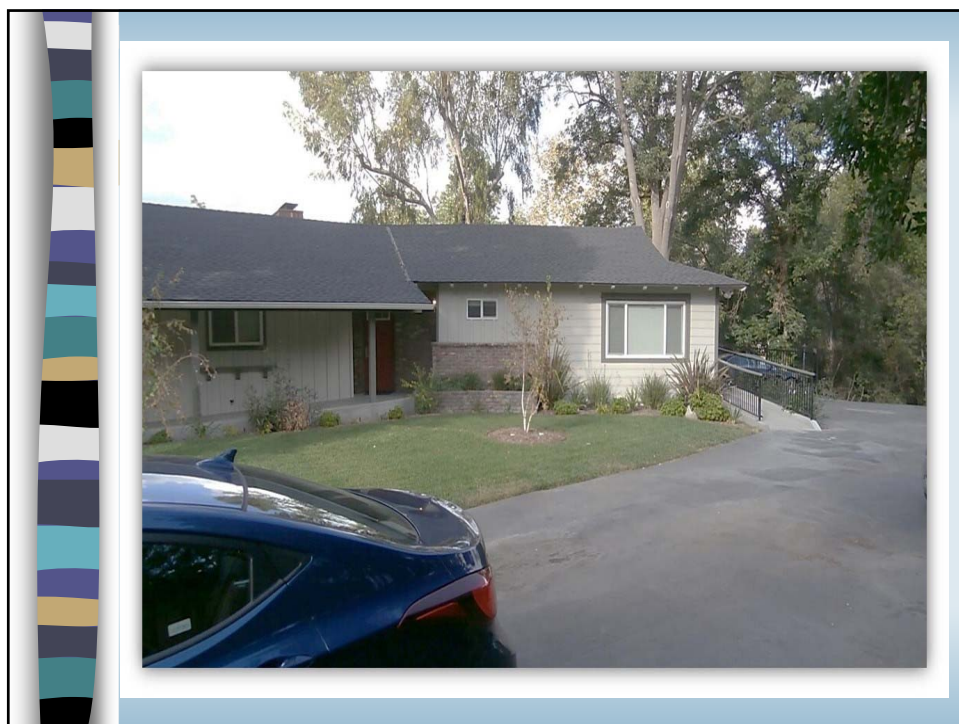
Although homes are fully equipped for people with serious health care needs, the design, décor and furnishings make facilities feel homelike. Some hallways are extra wide to accommodate two wheelchairs side-by-side. Therapeutic sensory stimulation areas are included in homes.



9

Each individual has a customized bed of their own. Beds can have retractable side rails that disguise their function as hospital beds. Each bedroom is outfitted with an overhead tracking system and its own wheelchair accessible door leading to the yard outside. Besides having hidden side rails, these beds also have settings to provide vibration and massage to provide individuals with increased blood circulation while they rest.







Delayed Egress/Secured Perimeter Homes

- Limited authority now exists for residential facilities to be equipped with both delayed egress devices and secured perimeter fences.
- These safety features are carefully designed for individuals who, due to difficult-to-manage behaviors or a lack of hazard awareness and impulse control, would pose a risk of harm to themselves or others. The addition of a secured perimeter ensures that individuals are supervised when they wish to go outside the property limits.



Enhanced Behavioral Supports Homes

- These homes provide non-medical care for individuals who require enhanced behavioral supports, staffing and supervision in a homelike setting.
- They also have enhanced monitoring by regional center case managers, regional center behavior professionals, and DDS.
- Additional enhancements include more staffing and staff training.

Community Crisis Homes (CCH)

- A facility certified as an adult residential facility, providing 24-hour non-medical care to individuals in need of crisis intervention services, who would otherwise be at risk of admission to the acute crisis center at Fairview Developmental Center, Sonoma Developmental Center, or other acute care facility.



Intermediate Care Facilities

Intermediate Care Facility – Developmentally Disabled/Habilitative (ICF-DD/H)

- Intermediate Care Facility – Developmentally Disabled/Habilitative (ICF-DD/H): An ICF-DD/H provides 24-hour personal care, developmental services, and nursing supervision.



Intermediate Care Facility – Developmental Disabled/Nursing (ICF-DD/N)

- An ICF-DD/N provides 24-hour personal care, developmental services, and nursing supervision for people who have intermittent recurring needs for skilled nursing care.
- These individuals may have chronic, non-acute medical conditions that require more regular nursing and monitoring.

Intermediate Care Facility – Developmentally Disabled/ Continuous Nursing (ICF-DD/CN)

- The ICF-DD/CN program provides continuous nursing care to medically fragile beneficiaries in a small community-based residential setting.
- Nursing Facility (NF): A NF provides continuous skilled nursing and supportive care to individuals whose primary need is for skilled nursing care on an extended basis.



Questions?

CONTACT INFORMATION:



Emails:

Sonoma.closure@dds.ca.gov



Phone: (916) 654-1706

DDS has a dedicated phone line at our Sacramento headquarters to help answer questions about Developmental Center closures.

21