

The background features abstract geometric shapes in shades of orange and yellow, primarily on the right side, with a white background on the left.

Developmental Services Task Force Community Resources Workgroup

Welcome & Introductions

Purpose & Guiding Principles

DS Task Force Guiding Principles

Topics to consider when proposing changes to the community system

- ▶ Lanterman Act
- ▶ Person Centered Planning
- ▶ Consumer Choice/Self-Determination
- ▶ Health and Safety
- ▶ Community Integration
- ▶ Equity in Service Access
- ▶ System Stability
- ▶ Technology

Background

Services in the Community

- ▶ Community Access
- ▶ Durable Medical Equipment
- ▶ Early Start Therapeutic Services
- ▶ Employment
- ▶ Independent Living Services
- ▶ Transportation
- ▶ Therapies
- ▶ Translator/Interpreter Services

Community Living Options



The level of support an individual needs to be safe, healthy, and happy in their living situation




Needs determined by the Interdisciplinary Team (IDT) through the annual Individual Program Plan (IPP)





Variety of options available for regional centers to provide community living arrangements


Newer Residential Models



Adult Residential Facility for
Persons with Special
Healthcare Needs (ARFPSHN)



Enhanced Behavioral Supports
Homes (EBSH)



Community Crisis Homes
(CCH)



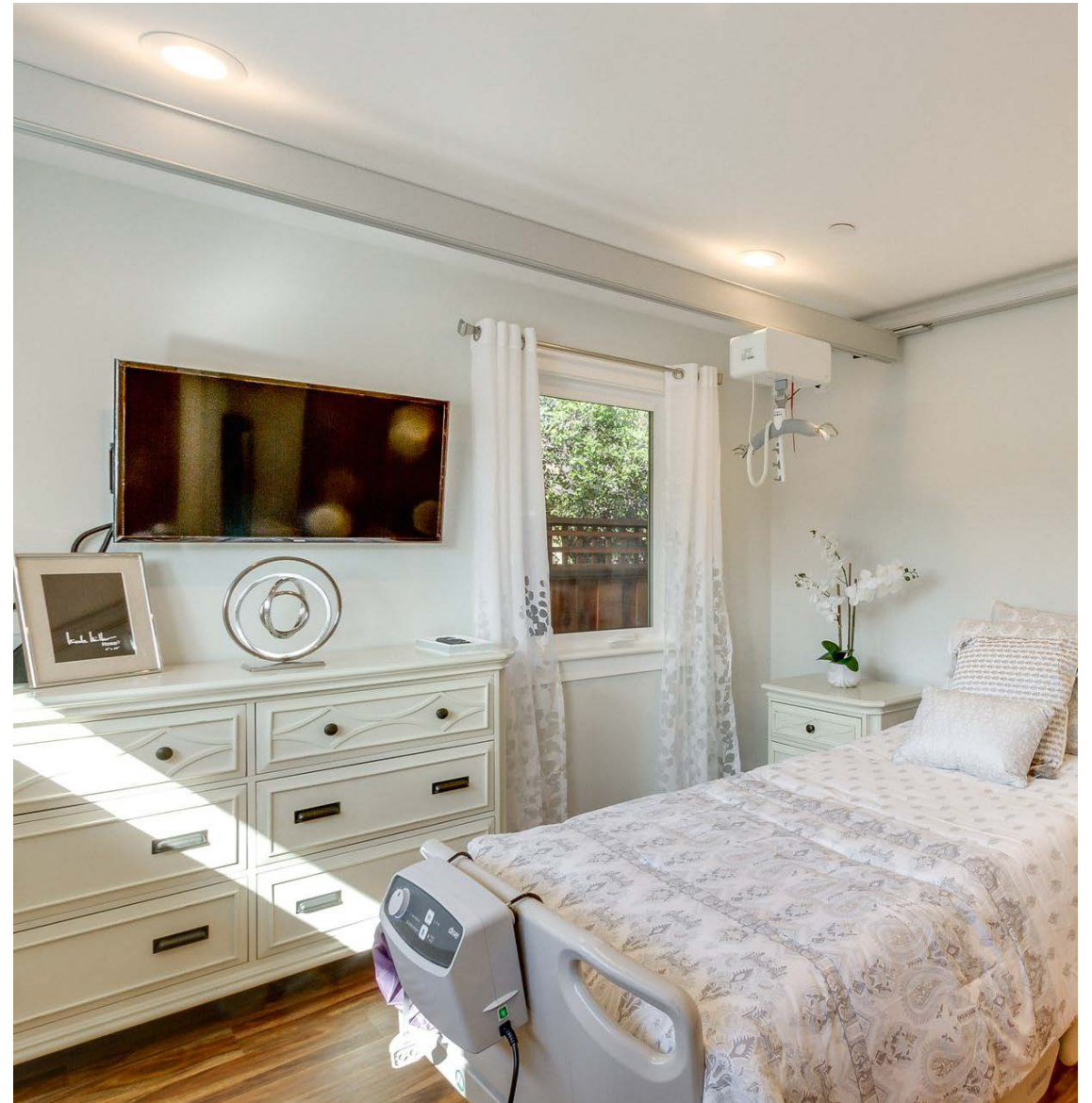
ARFPSHN Homes

Provides 24-hour health care and intensive support services in a homelike setting and can serve up to five adults

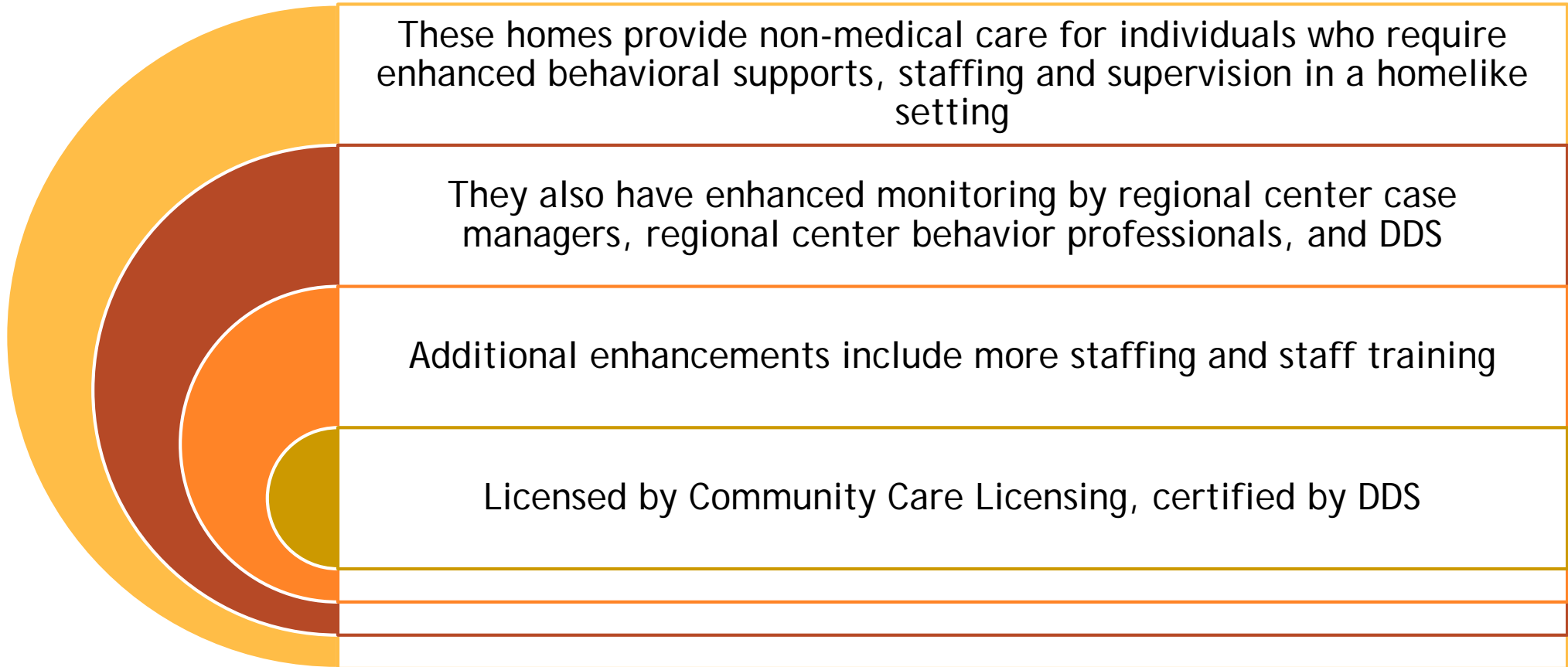
Licensed by Community Care Licensing, certified by DDS, and vendored by Regional Centers

Associated with the closure of any developmental center statewide

Also known as 962/853 homes



EBSH





CCH

An adult residential facility, providing 24-hour non-medical care to individuals in need of crisis intervention services, who would otherwise be at risk of admission to a state-operated facility, an out-of-state placement, an institution for mental disease or other acute care facility

Licensed by Community Care Licensing, certified by DDS

Can be state-operated or vendored by the regional centers



Other Community Living Options



Parent/Family
Member's Home



Independent
Living Skills (ILS)



Supported Living
Services (SLS)



Family Home
Agency (FHA)



Self-
Determination
Program (SDP)



Licensed
Residential
Services

Community Resource Development

Community Placement Plan (CPP)



Purpose of CPP



Welfare and Institutions Code 4418.25



Annual Funding

- POS: Placement, Assessment, Start-Up
- OPS



Buy It Once Model - Sustainable Housing

- Housing Developer Organizations
- Restricted Covenants



Enhancement of Community Resource Development Plan (CRDP)

- Stakeholder Engagement
- Requests Driven by Data

CPP Examples

EBSH

CCH

Non-Residential

CRDP Examples



Supported Employment



Multi-Family Housing

Home and Community-Based Services (HCBS) Funding



429 provider projects have been funded since 2016/2017 - \$15 million distributed annually



Funding was approved for wheelchair accessible vehicles to allow for/increase consumers' community involvement



Funding was approved for person-centered planning training and train-the-trainer sessions



Funding was approved to expand employment opportunities for participants within their desired career path

Disparity Funds Program



192 projects have been funded since 2016/2017 aimed at addressing equity and reducing disparities - \$11 million awarded annually



Funding was approved to make outreach and education materials more accessible to non-English speaking families including through video format and fact sheets



Funding was approved for peer navigators (Promotoras) to provide support to families in understanding and accessing regional center services



Funding was approved for a series of workshops on disability awareness, the school system, regional center services, and self-advocacy

AB 2083: System of Care

Person-Centered and Not Program-Centered

- Develop a coordinated, timely, and trauma-informed system-of-care approach for foster children and youth who have experienced severe trauma, served by multiple systems and programs

Community Development for Children Dually Served

- RCEB & SDRC
- 4 homes: 2 CCH and 2 EBSH

Other Community Development



Education



Mental Health



Others?

Breakout Discussions

Next Steps

DSTaskForce@dds.ca.gov