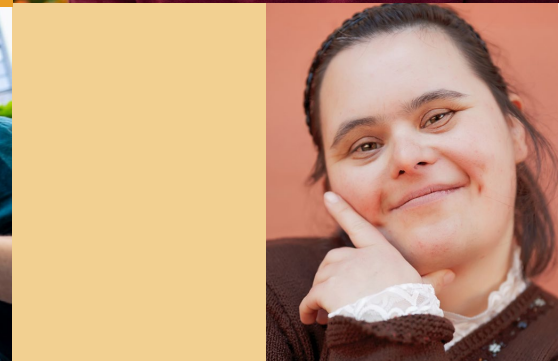


Direct Service Professional (DSP) Training Stipend Webinar for DSPs



October 9, 2023



HOUSEKEEPING



Interpretación en español: haga clic en el globo blanco en la parte inferior de la pantalla con la etiqueta "Interpretation." Luego haga clic en "Spanish" y seleccione "Mute original audio."



ASL interpreters have been "Spotlighted" and live closed captioning is active



This meeting is being recorded & will be made available to participants

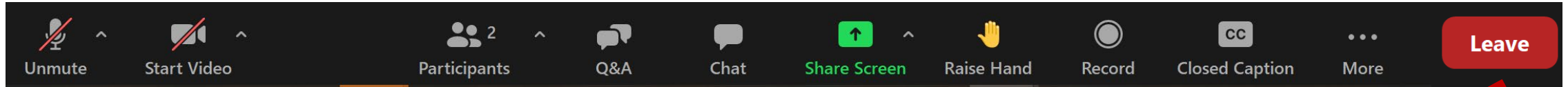


Materials are online at: <https://www.dds.ca.gov/initiatives/workforce-initiatives>



If you have questions after this presentation, please contact your regional center

ZOOM TIPS



Please type
any questions or
comments you have
into the Q&A

Leave the
webinar at
the end of
the meeting



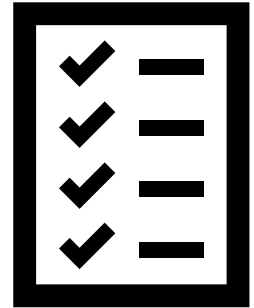
- Features will vary based on the version of Zoom and device you are using



- Some Zoom features are not available for telephone-only participants

AGENDA

- Purpose and Summary of the DSP Training Stipend Program
- DSP Training Stipend Eligibility
- DSP Training Stipend Process
- Frequently Asked Questions
- Questions and Answers



Purpose and Summary of the DSP Training Stipend Program

Purpose and Summary of the DSP Training Stipend Program

DSP Training Stipend Program:

- DSPs can receive up to two \$625 (before taxes) stipends when they complete approved training courses through June 30, 2024.



Purpose and Summary of the DSP Training Stipend Program

Enhance the quality of services received by individuals

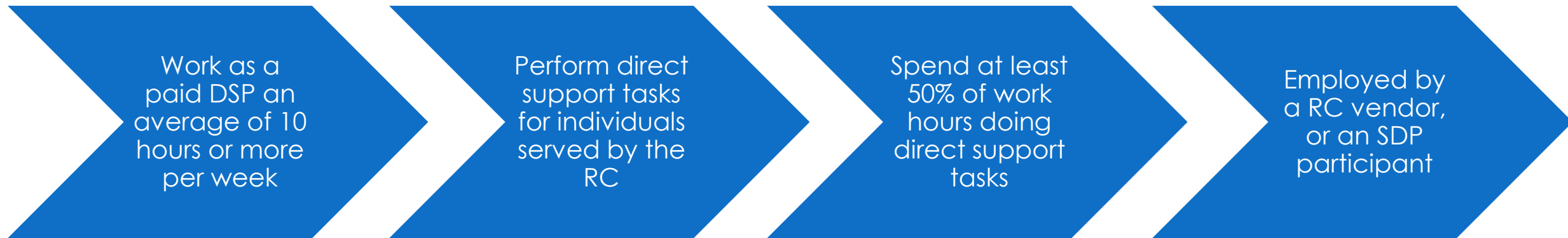
Improve DSP retention

Increase interest among DSPs in skills development and continuous learning

DSP Training Stipend Eligibility

DSP Training Stipend Eligibility

To be eligible for the training stipend, DSPs, including some frontline supervisors and clinical staff, must meet the following eligibility requirements.



DSP Training Stipend Eligibility

The following are **NOT** eligible even if a portion of their work involves providing direct support:

- Staff paid through a funding source other than the regional center, such as Medi-Cal, health insurance, or a school district; with the exception of DSPs working in ICF/DD, ICF/DD-H, and ICF/DD-N
- Those who only provide intermittent service such as home modification and/or meal delivery services;
- Staff hired through a temporary personnel agency;
- Contract or 1099 workers;
- On-call or PRN workers;
- Volunteers; and
- Administrative or supervisory staff, **unless** they spend 50% or more of their time doing direct support work


DSP Training Stipend Process

ARCA Learn Introduction

The Association of Regional Center Agencies (ARCA) promotes, supports, and advances regional centers in achieving the intent and mandate of the Lanterman Developmental Disabilities Services Act.

ARCA has offered DDS the use of its Learning Management System (LMS), called ARCA Learn, to host the DSP Training Stipend Program courses.

DSP Training Stipend Process



English ▾

Log In

Welcome to the ARCA Learning Center. If you are a new user, select "Register" to create an account here and login. If you are a returning user, enter your email address and password and select "Login". If you have forgotten your account details, click on the link below to reset your password.

If you already have an account with your regional center, select the "Register" button below, and select Already have an account "Login" button and use your existing email and password to complete your registration for ARCA-DDS Domain.

You may also play the video below (Click Full Screen and Play icons) to see a short tutorial on create an account.

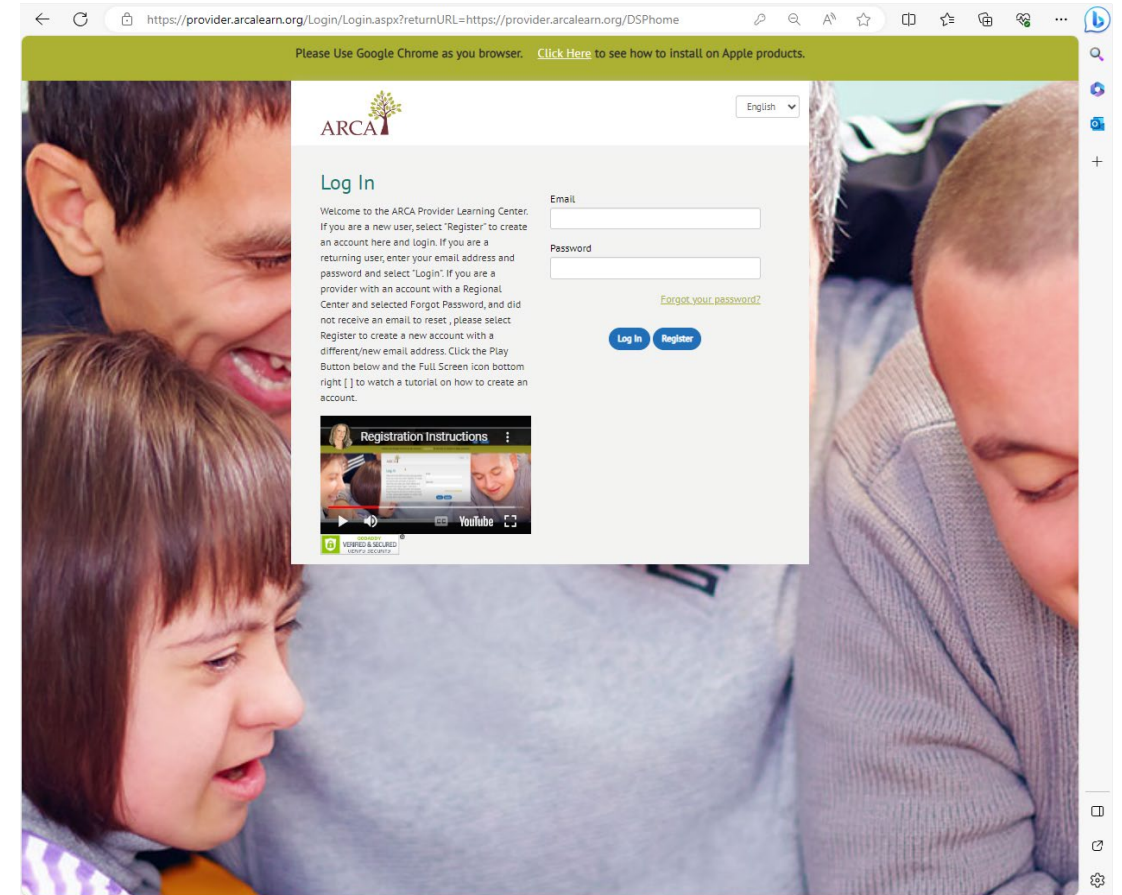
[Play tutorial](#)

Email

Password

[Forgot your password?](#)

[Log In](#) [Register](#)

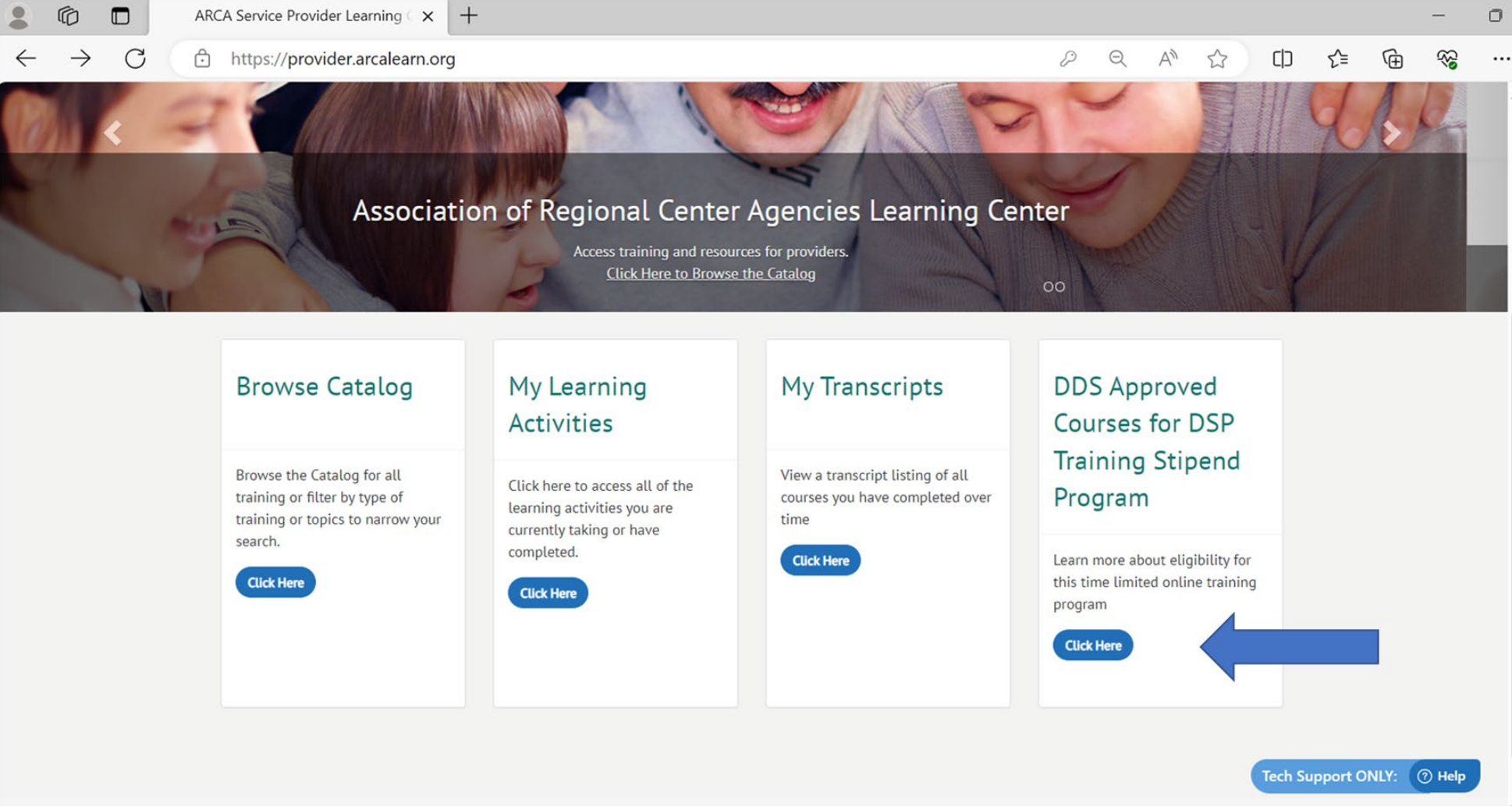


DSP Training Stipend Process

How to register:

- Enter required information, such as name, email, create a password, etc.
- Select the regional center from the pull-down list – this must be done first.
- Enter the vendor number provided by your employer. Typically, these are six characters long and might include letters and numbers. Do not use extra spaces or characters.
- Select the “Validate” button.
 - This should display your employer’s name. If the name shown is not your employer, select the back button or refresh the page to start over. If the employer’s name is still incorrect, stop the registration process and ask your employer to confirm their vendor number.
 - You will not be able to change the vendor number after it has been validated.
- You can select the “Help” button in the right lower corner of your screen for assistance with registration.

DSP Training Stipend Process



DSP Training Stipend Process

Go to ARCA Learn and register/sign in.
Courses are offered online only at: <https://provider.arcalearn.org>



Complete an approved DDS course.



Submit a brief survey at the end of each training course.



A certificate of completion will be emailed to the you.



Your employer will issue the payment no later than three months after the conclusion of the training.

DSP Training Stipend Process

Current DDS Approved Training Courses

Code of Ethics
(**Must be taken first**)

Informed Decision-
Making

Person Centered
Supports: DSPs and
the HCBS Final Rule

All trainings are video-based and less than one hour.

Continuing Education Units (CEUs)

All trainings offered as a part of the DSP Training Stipend Program can be credited towards meeting Continuing Education Unit (CEU) requirements through Community Care Licensing.



Can DSPs take the training courses during work hours?

DSPs can take the trainings during regular work hours, but they should first check with their employer.



DSP Training Stipend Process

A few reminders:



The DSP Training Stipend Program is time-limited and all courses must be completed by June 30, 2024



DDS-approved courses are offered online only at:
<https://provider.arcalearn.org>



You must register with ARCA Learn in order to access the courses for the DSP Training Stipend Program



You will need your Employer's vendor number and the name of the regional center they are affiliated with

Frequently Asked Questions

Frequently Asked Questions

Q1: If I am a DSP that took part in the California Department of Social Services *IHSS Career Pathways Program* or the California Department of Aging *CalGrows Program*, am I eligible to participate in the *DDS DSP Training Stipend Program*?

Q2: If I am a DSP at an Intermediate Care Facility that serves individuals with developmental disabilities and is vendored with a regional center, am I eligible for the *DDS DSP Training Stipend Program*.

Q3: How will I get the training stipend if I work for more than one vendor at the same time?

Q4: I work for a transportation provider that is vendored with the regional center. Am I eligible for the training stipend?

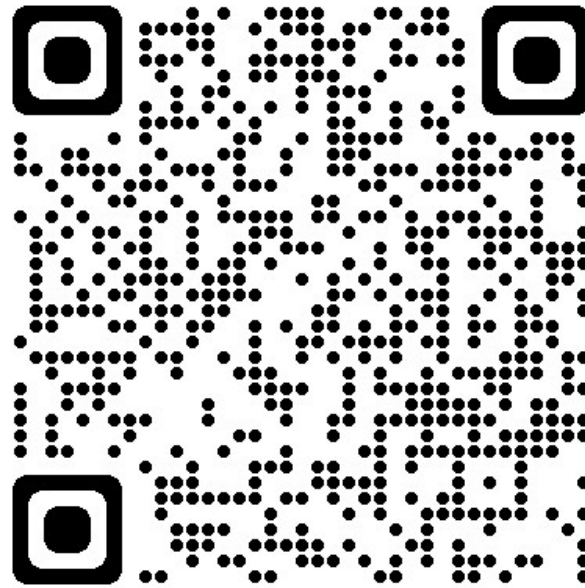
Q5: I am a DSP for a Self-Determination participant, am I eligible for the training stipend?

Q6: I am a DSP for an individual receiving regional center services through Participant-Directed Supports. Am I eligible for the training stipend?

Spread the Word

The DSP Training Stipend Program is for all DSPs and Clinical Staff who meet the eligibility requirements.

Tell your colleagues about this wonderful opportunity!



For More Information

Visit the DDS Website

<https://www.dds.ca.gov/initiatives/workforce-initiatives>

Click on the “DSP Training Stipend Program” tab about half-way down on the page

For additional information, please contact your regional center.

Questions and Answers

