

# *ACRE*

## National Certificate in Employment Services



# About Us

---

Founded in 1987 by Steve Zivolich

---

Supported over 20,000 individuals with disabilities to become competitively employed in integrated settings.

---

Hosted the Integration Institute in the 1990's. Keynotes including community inclusion advocates such as Lou Brown.

---

Moved from grant-based funding to DDS funding in late 1990s.





# OBJECTIVE

To develop California Centric ACRE certified curriculum. Once developed, IRI will have a cohort of trainers that will provide trainings to employment specialists (job coaches, job developers, employment managers, and directors), Regional Center Employment Specialists, as well as agencies looking to move toward making employment a service priority.





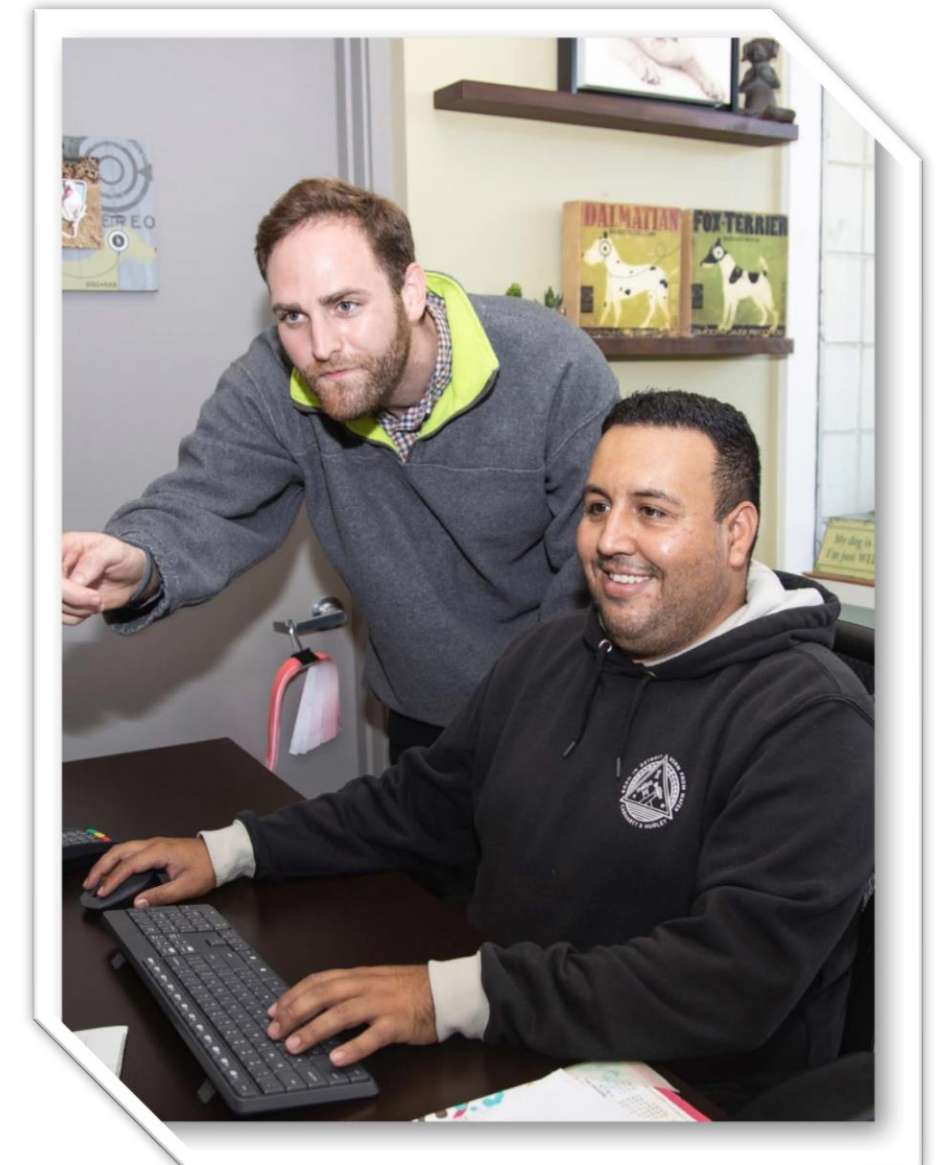
# ACRE Training Curriculum



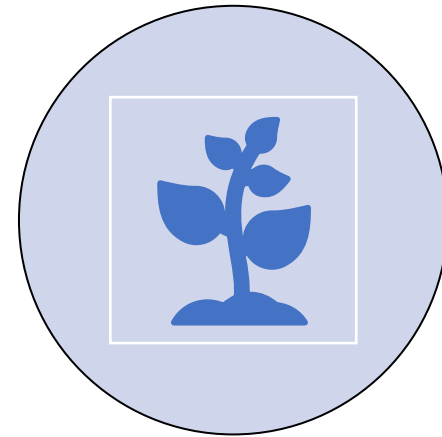
- The Employment Services Certificate is being offered by the Integrated Resources Institute and is based on a curriculum developed by TransCen, Inc.
- This Employment Services Certificate is comprised of 6-day workshop (30 hours) and two sets of field-based assignments (10 hours). The training schedule may be modified to meet the needs of the trainee, and the workshops can be offered remotely or self-paced.

The Employment Services Certificate Course will consist of the following 4 modules which cover 39 of the ACRE established Competencies:

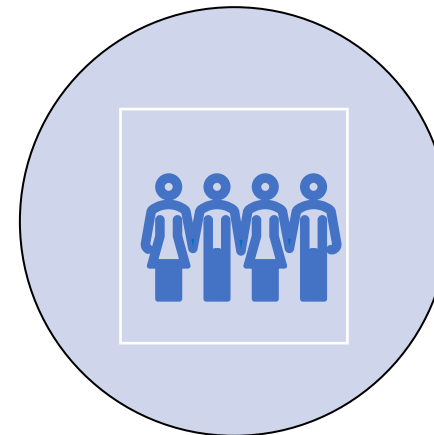
1. Application of Core Values and Principles of Practice
2. Individualized Assessment and Employment/Career Planning
3. Community Research and Job Development
4. Workplace and Related Supports



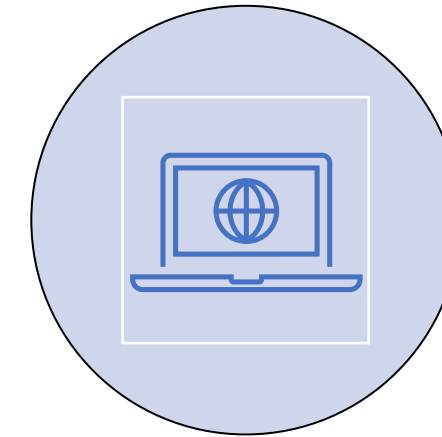
# Project Steps



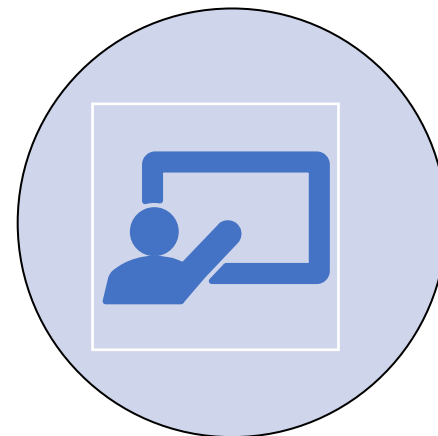
**ADAPT ACRE CURRICULUM TO CREATE A CALIFORNIA CENTRIC CERTIFIED CURRICULUM.**



**ADAPT THE CERTIFIED CURRICULUM INTO A IN-PERSON TRAINING FORMAT.**



**ADAPT CERTIFIED CURRICULUM INTO AN ONLINE SELF-PACED FORMAT.**



**TRAIN THE TRAINERS.**



**WORK WITH VENDORS AND REGIONAL CENTERS TO ESTABLISH TRAINING DATES AND LOCATIONS.**



**DELIVER CURRICULUM TO LEARNERS.**

# Current Status

California Centric Curriculum has been approved by ACRE

We have conducted 1 in-person training

Completed our first online self-paced training

Have 1 additional in-person training scheduled in January 2024

Have 4 additional self-paced online trainings scheduled up till April 2024

# Challenges

- ✓ Technical Issues with the online learning platform
- 📺 Learners' proficiency in using technology to access the course
- 📍 Supporting learners in time management in completing the course
- 📖 Adapting ACRE curriculum to reflect current time
- 💰 Free Training reduces incentive to complete the course

# Successes



**3 CIEs reported by course learners during and after completion of ACRE training**



**All upcoming ACRE trainings fully booked through April of 2024**



**We expanded our regions based on interest and with DDS approval**



# Next Steps



**Assess, refine, and improve the course curriculum**



**Measure outcomes of learners and those persons they support**



**Perform outreach to offer training to more stakeholders**



# Q and A



**Thank You!**

