

State Systemic Improvement Plan (SSIP) Constituency Group B

Meeting Two



August 23, 2024



Housekeeping



- ASL interpreters have been “Spotlighted” and live closed captioning is active

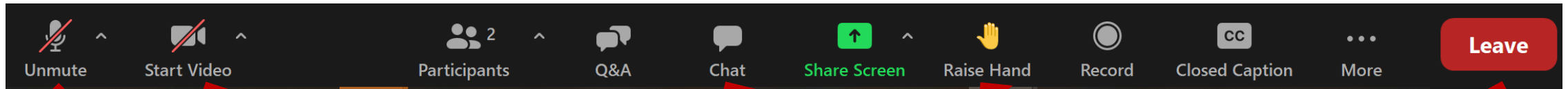


- Materials are available at:
- [State Systemic Improvement Plan \(SSIP\) - CA Department of Developmental Services : CA Department of Developmental Services](#)



- Submit written comment via email to: Earlystart@dds.ca.gov

Zoom Tips



Unmute mic only when it's your turn to speak

Turn your webcam on/off

All attendees can type questions/comments in the Q&A

Chat is available here

You can raise your hand when you want to speak

Leave the webinar at the end of the meeting

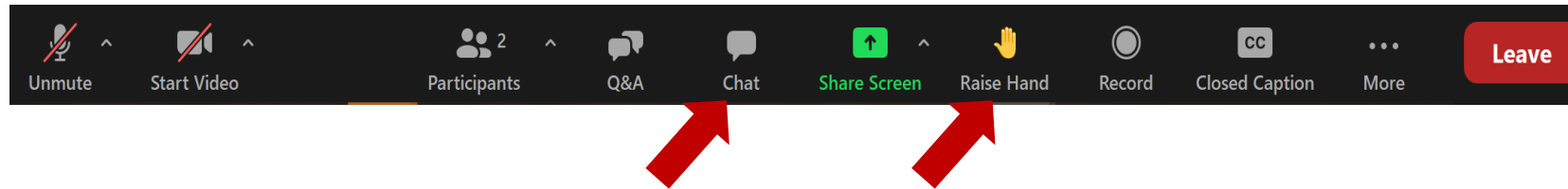


- Features will vary based on the version of Zoom and device you are using
- Some Zoom features are not available for telephone-only participants

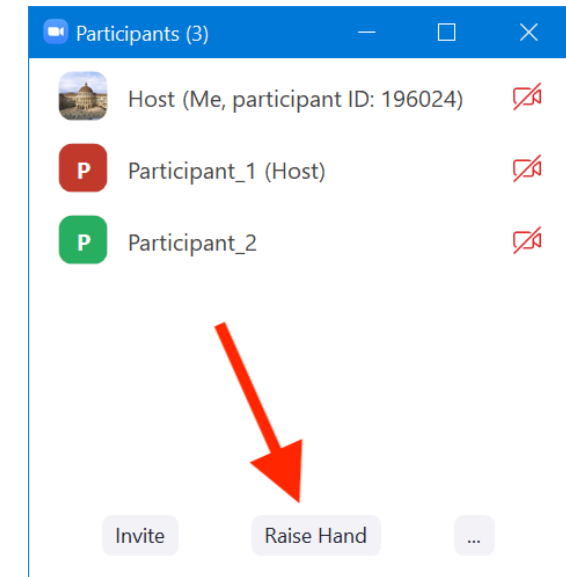
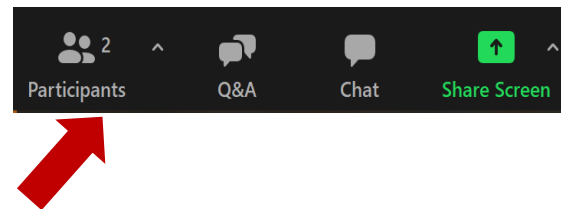


Providing Comments

- Please use the “Chat” or “Raise Hand” to comment.



- You may need to click on “Participants” and a new window will open where you can “Raise Hand.”



Purpose of Today

- Overarching Goal:
 - Help improve child and family outcomes for infants and toddlers with disabilities through the SSIP
- Today's Agenda:
 - Review the tentative SSIP theory of change
 - Provide input and feedback on proposed plan

SSIP Public Input Process

In 2024, since April:

- **Advisory Group:** four meetings (and more to come)
- **Constituency Groups:** two series of meetings (and more to come)
 - A. Families and advocates
 - B. State colleagues and higher education
 - C. Regional centers and providers
- **State Interagency Coordinating Council:** upcoming
- Follows a series of meetings and discussions in 2022 that spurred Early Start to re-envision the SSIP

The SSIP in Program Context

1. Pick an outcome as the focus of the work

Effective professional preparation (preservice)

Effective ongoing professional development

Practitioners have the knowledge and skills to use evidence-based practices

Early Start provides services in accord with state and federal requirements

Early Start practitioners use evidence-based practices to support families

Family effectively supports child in becoming an active participant

Families understand their child's strengths, abilities, and special needs
Families know their rights and advocate effectively for their children (OSEP)
Families help their children develop and learn (OSEP)
Families have support systems
Families access desired services, programs, activities in their community

Child actively participates in home and community

Children have positive social emotional skills (including social relationships)
Children acquire and use knowledge and skills (including early language/communication)
Children use appropriate behaviors to meet their needs

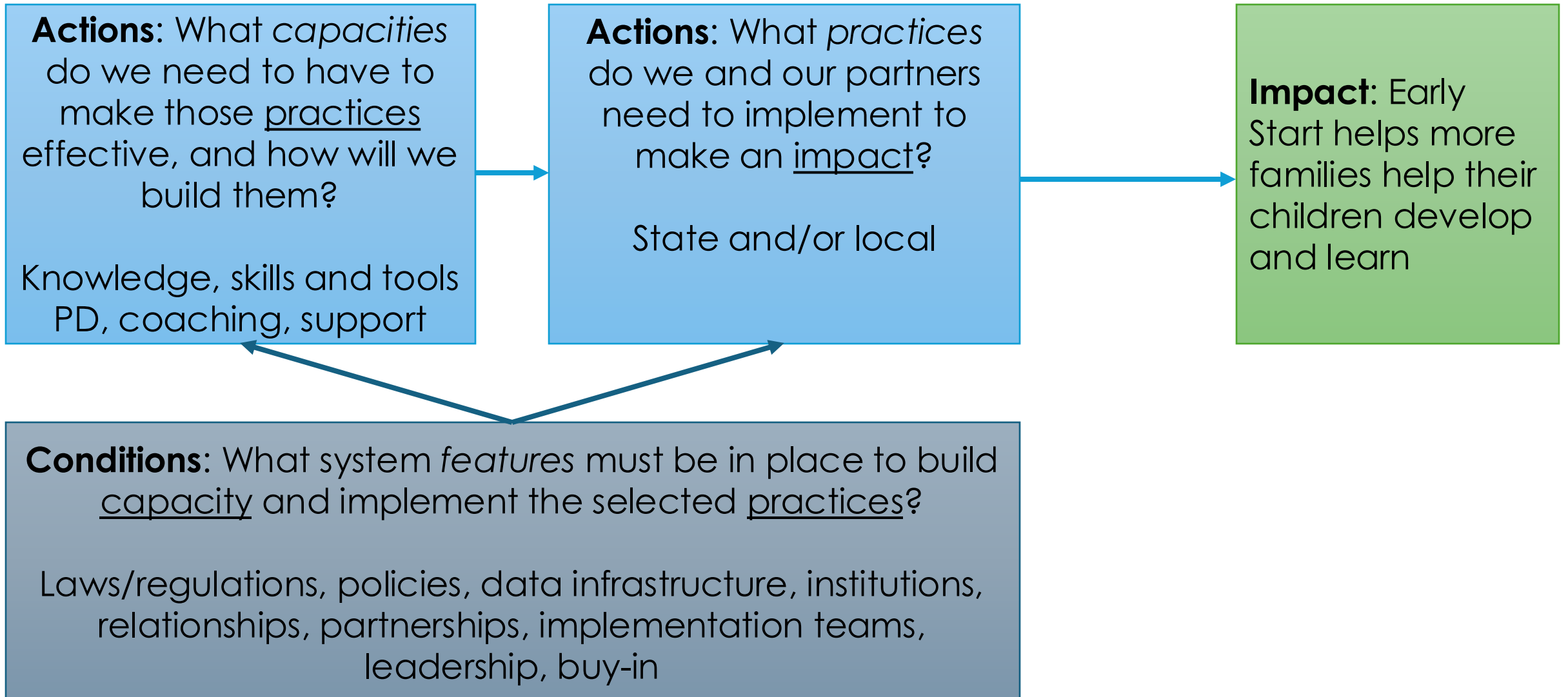
Working conditions support implementing evidence-based practices (e.g., leadership, case loads, shortages, etc.)

2. Implement one or more practices that have been shown to improve that outcome

3. Implement strategies that have been shown to improve practitioners' ability to use those practices

4. Ensure that the program infrastructure can support the plan (data, governance, etc.)

Basic Theory of Change



Defining the Outcome

The SSIP will improve how Early Start **helps its client families help their children develop and learn.**

Reasoning: **a) in early intervention, a child's outcomes depend on family engagement and participation in the child's development**

b) providers' practices impact families first, so the measurement is closer to the intervention

c) families need support, and the SSIP focus can draw program and public attention to their needs

A New Plan



Contextual Considerations

✓ Need

- Is there a demonstrated need to focus on the results area?
- Do the disaggregated data reveal narrower areas of need?
- Would addressing this result area significantly improve outcomes?

✓ Alignment

- Does this result area align with current state agency initiatives and priorities?
- How well does this result area align with other state priorities?

Resources

- Does the state have financial resources available to address the needs identified?
- Are there TA resources and supports available to address the needs?
- Are there EBPs that may positively affect the issues revealed in the results data?

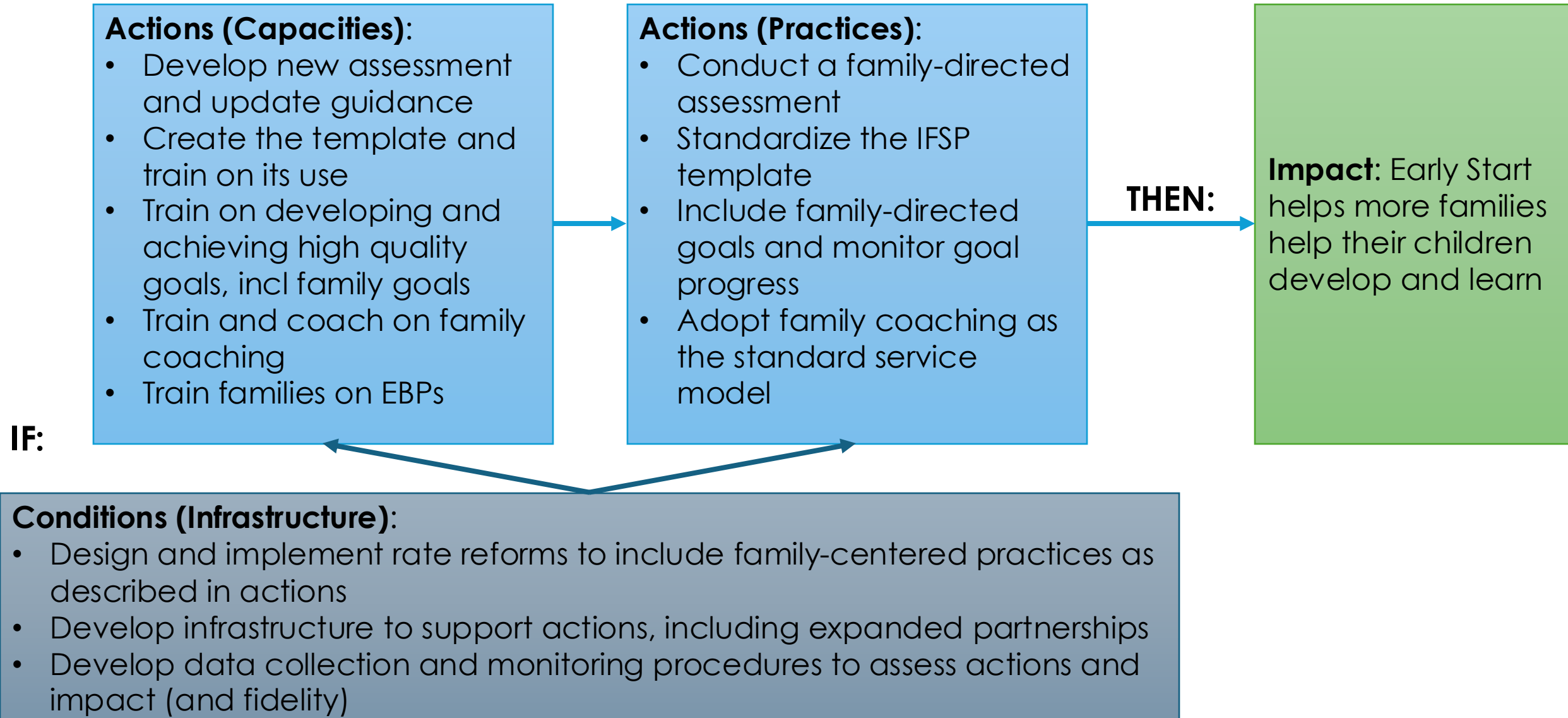
Organizational Capacity

- Does the state agency have sufficient staff availability and competency to support potential improvement strategies?
- Does the state agency have sufficient leadership support and governance capacity?

Readiness

- Is there a sense of urgency to address the needs revealed in the data?
- Is there buy-in/ownership across the state, practitioners, families, and constituents?
- Are staff, offices, and regional centers ready to adopt improvement strategies?

Preliminary Theory of Change



What ***practices*** do we and our partners need to implement to make an impact?

Likely strategies:

- Conduct a family-directed assessment
- Standardize the IFSP template
- Include family-directed goals and monitor goal progress
- Adopt family coaching as the standard service model
 - In what form, reflecting which required components?

What **capacities** do we need to have to make those practices effective, and how will we build them?

Likely strategies:

- Develop new assessment and update guidance
- Create the template and train on its use
- Train on developing and achieving high quality goals, incl family goals
- Train and coach on family coaching
- Partner to provide training on EI best practices/SSIP practices for families

Conditions

What system **features** must be in place to build capacity and implement the selected practices?

- In what order should features be developed or adopted?

- **Reframe EI expectations from referral to exit**
- **Design and implement rate reforms to promote family-centered practices**
 - Qualifications, training requirements
 - Support for RCs/vendors to improve EI training?
 - Align performance measures to EBPs? (beyond compliance)
- **Develop infrastructure to support actions, including expanded partnerships**
 - Update IFSP template and guidance
 - Design, adopt and implement a family-directed assessment, set requirements and expectations
- **Deepen partnerships and partner expectations**
 - Expand expectations and content for local training modules across regional centers
 - Incentivize high compliance and performance measures that include outcomes
- **Develop data collection and monitoring procedures to assess actions and impact (and fidelity)**

Concluding Discussion

Recommendations for implementation

What's Next?

State Leadership Team activities:

- Complete the infrastructure analysis related to family outcomes
- Finalize the theory of change
- Draft the improvement plan

Public engagement activities:

- Advisory Group Meeting #5: to be scheduled for late September
- Constituency Group Meetings Part 3: to be scheduled for October

QUESTIONS AND COMMENTS

Please contact:

Ashley Lambert

Ashley.Lambert@dds.ca.gov

