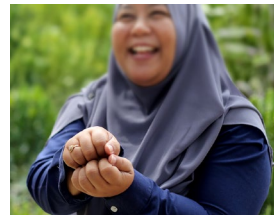


# Introduction to the Standardized Family Support Tool Initiative

April 10, 2025



# Welcome

A new tool is being created for regional centers to determine individuals' need for respite, day care and personal assistance.

The Standardized Family Support Tool will:

- Be easy-to-use,
- Be person and family-centered, and
- Provide a more consistent experience, no matter where individuals and families live in California.



# Agenda

Welcome

Introductions

Background

Project Plan & Timeline

Using the Tool

Ongoing Community Engagement

## BURNS & ASSOCIATES

.....  
A Division of HMA

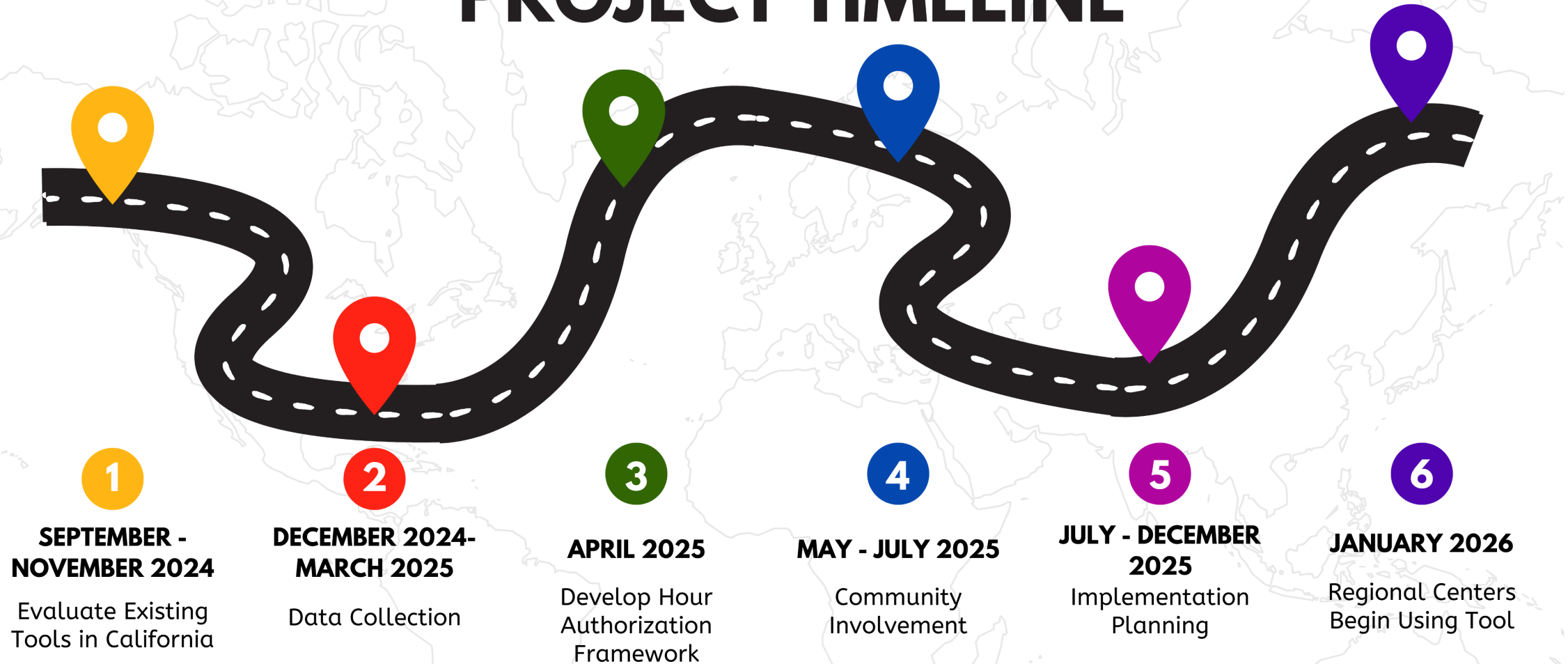


Human Services  
Research Institute

## Why Create a Standardized Family Support Tool?

- The community raised concerns about differences in the amount of services people get across regional centers.
- Little Hoover Commission report (April 2023) highlights inconsistencies in services among racial and ethnic groups and among different regions across the state.
- Welfare & Institutions Code section 4435.1(c) (Senate Bill 138, Chapter 6, Statutes of 2023) requires standard tool for assessing need for respite.
- Recognizing community interest in standardizing tools for other services, DDS is creating a single tool for determining the amount of respite, day care, and personal assistance services needed.

## PROJECT TIMELINE



## Where Are We Now?

- Data collection is finished
  - During data collection period, individuals, families, and service coordinators were asked about their experience with the Tool
    - Clear and easy to understand
    - Relevancy of questions
    - Overall feedback on Tool
- Consultants are analyzing the feedback and data.
  - Modify the Tool based on feedback and data
  - Develop hour authorization framework which will determine authorized hours of service



# Using The Tool

- The Tool will not replace the IPP process. It will be used with information provided on the IPP.
- Single Tool for determining hours for all or some of the following services:
  - Respite
  - Personal assistance
  - Day care
- Statute requires regional centers obtain information about respite needs from family members and, when appropriate, from other caregivers.
- The Tool is an interactive process between service coordinators and families.
- DDS will issue guidance to regional centers prior to January 2026 to address potential impacts to current service authorizations.
- There will be accommodations for meeting exceptional needs.
- The Tool will be translated into the common threshold languages.
- The Tool will be implemented beginning January 2026.

# Ongoing Community Engagement

## Draft Proposed Standardized Family Support Tool will be Presented for Public Comment

- Webinar in June 2025
- 30-Day public comment period following the webinar
- All comments will be submitted via email
- All comments will be reviewed and help DDS identify necessary modifications to the Tool
- Look for email announcing webinar date and registration

## Standardized Family Support Tool Implementation

- Informational webinar in summer 2025
- DDS will monitor outcomes and make modifications as indicated

Thank You

